

FreshWater 1000 Under Counter - Cartridge replacement guide 1000X-25-PF

Cartridge Replacement Cycle

The recommended filter cartridge change cycle is 6 months

Important: The period between cartridge replacements is not guaranteed; it is an estimate based on filtering mains water of average quality. Please bear in mind that water quality varies from locality to locality and situation to situation. In areas with higher than average turbidity (particle contamination) more frequent cartridge changes may be necessary.

Before you begin

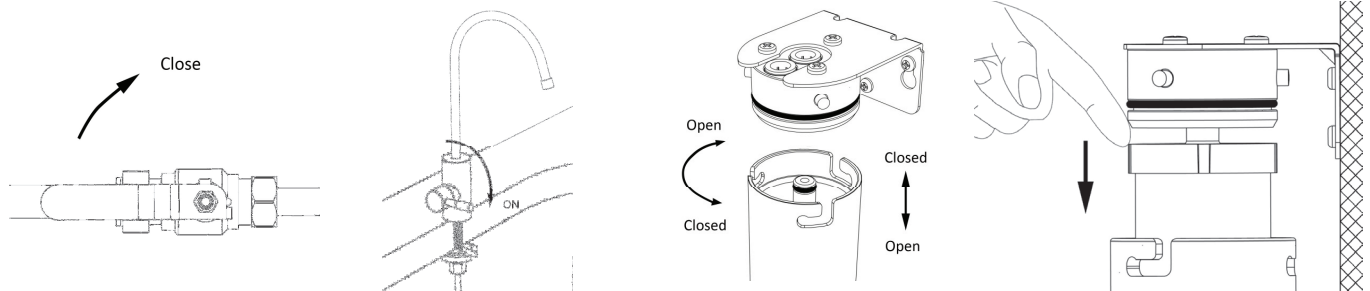
No special tools are required for this operation. All you will need is a suitable receptacle to catch any spillage and a cloth or a sponge handy.

Lubricating the rubber seals

For ease of assembly we recommend that a film of silicone grease is applied to the filter housing 'O' Seal at least every other cartridge change to maintain the smooth operation of the unit. Important note Only a WRAS approved silicon lubricant should be used for this purpose. Small tubes of a WRAS approved silicon grease can be purchased from FreshWater at www.freshwaterfilter.com

Disposing of the Spent Cartridge

You may dispose of the cartridge in your normal household waste. Both the ceramic and carbon components of FreshWater cartridges are biodegradable. You are welcome to return either the plastic parts or the complete cartridge to FreshWater for recycling. Should you decide to return the cartridge please allow it to dry naturally and return it in the original packaging.



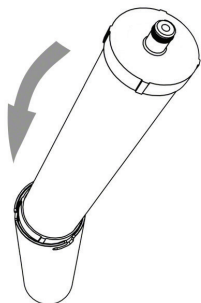
1. Locate the shut-off valve and turn off the mains water supply to the filter housing.

2. Turn on the dispenser tap to release the pressure in the system. Leave the tap in the 'on' position.

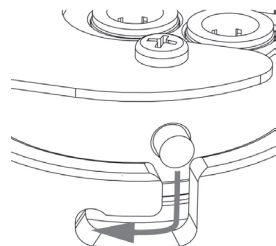
Important note. If the tap is not left 'on' the pressure trapped in the system will make it impossible to unlock the filter housing sump from the head.

3. Firmly grip the sump with both hands. Turn to the left and pull down. The sump and the filter cartridge should come away together. The filter canister will be full of water so it is advisable to position a bowl to catch any spills.

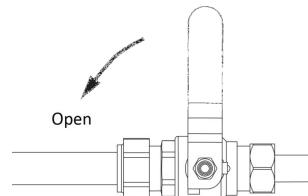
4. If the filter cartridge does not come away with the sump release it with an index finger by pushing down on the plastic rim.



5. Holding the sump over the sink remove the spent cartridge and empty the water in the sump. Dispose of the spent cartridge. Place the new cartridge in the sump.



6. Refit the sump to the housing head by engaging the pins in the slots and turning the sump to the right until it is fully engaged.



7. Turn on the water supply and check the system carefully for leaks. Leave the tap in the 'on' position and allow the water to run for a minimum of 10 minutes to flush the filter. Check the flow rate. The optimum flow rate is 2 litres per minute. If necessary the flow rate can be regulated by adjusting the stop valve.